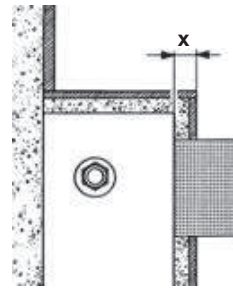


A. Grundplatte
B. Tastenpaar

A und B farblich kombinierbar

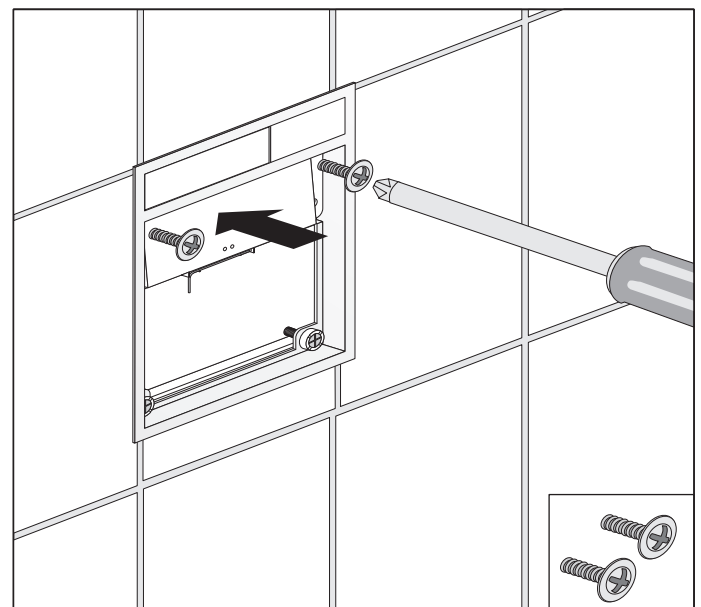
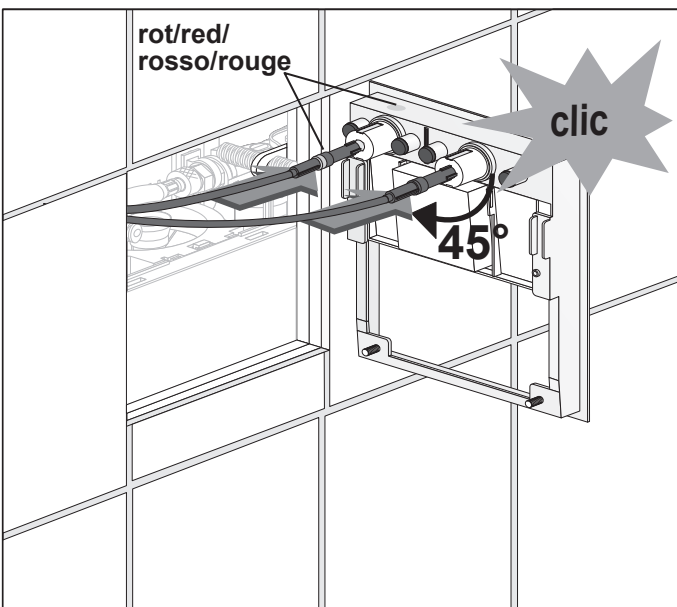
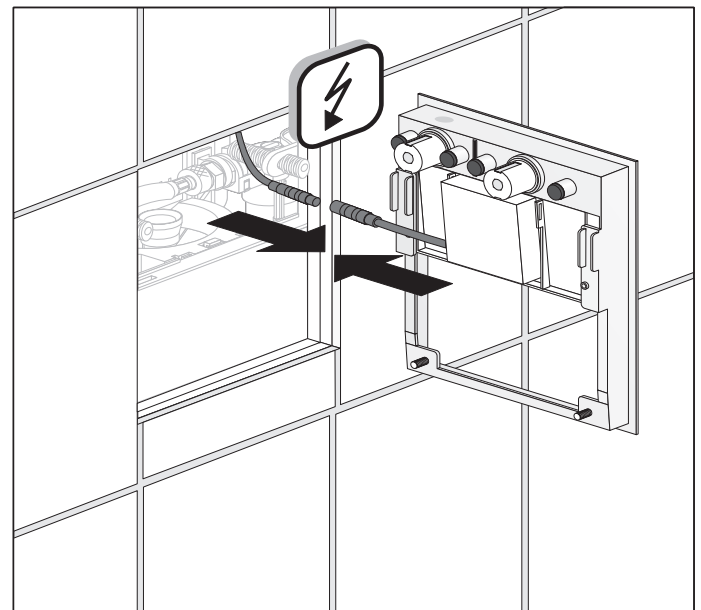
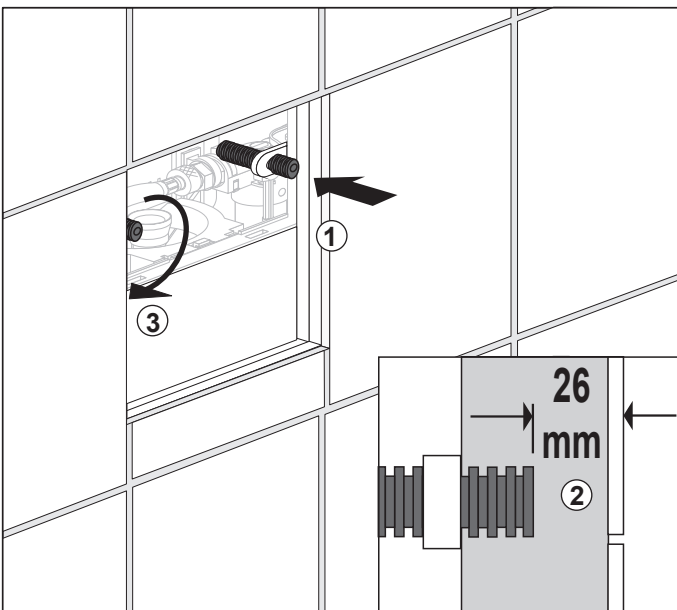
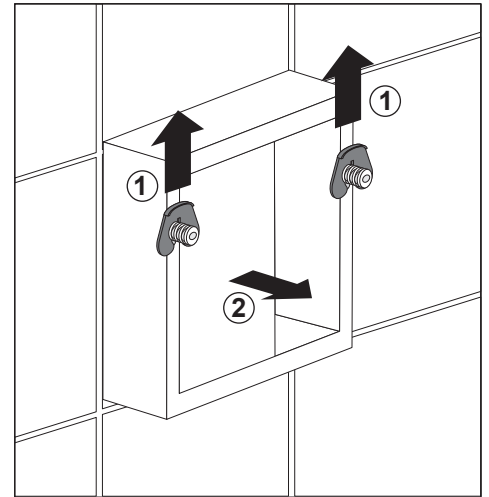
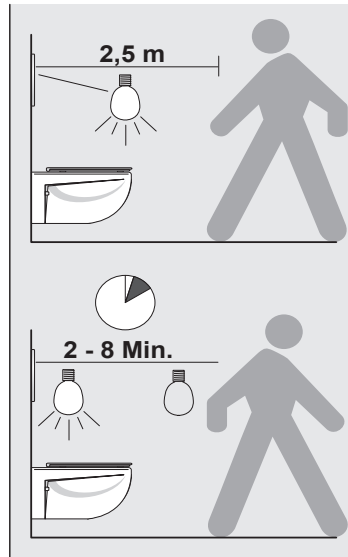
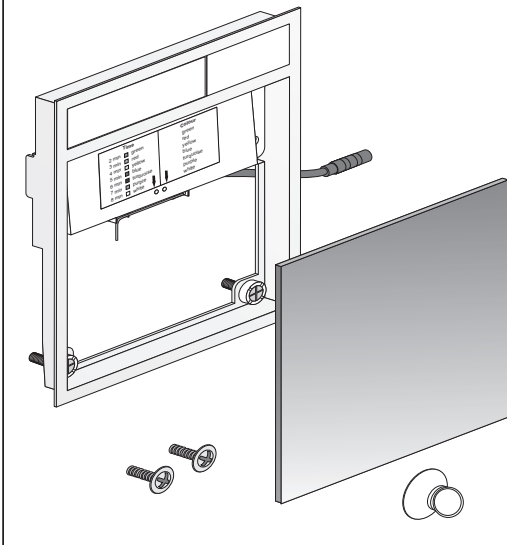


X – minimale Aufbauhöhe

UP-SPK: 30 mm

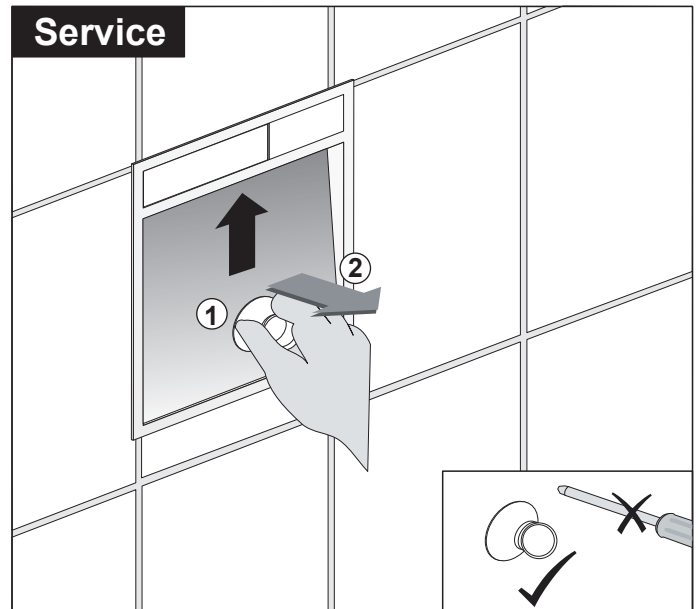
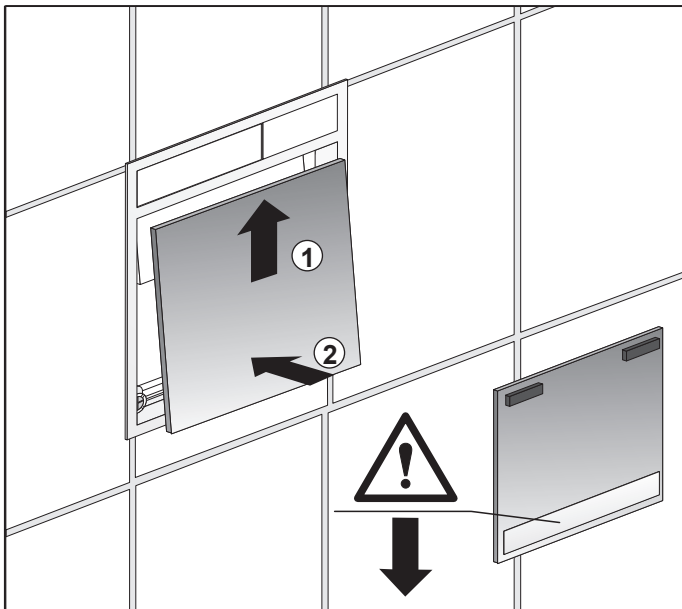
Nassbau: 30 mm

Trockenbau: 25 mm



Time		Colour
2 min	■ green	green
3 min	■ red	red
4 min	■ yellow	yellow
5 min	■ blue	blue
6 min	■ turquoise	turquoise
7 min	■ purple	purple
8 min	■ white	white

Diagram showing the control panel with arrows 1 and 2 pointing to the time and colour selection buttons respectively.



Service

Diagram showing service instructions. It includes a warning sign (exclamation mark in a triangle), a warning sign for Chlor Chlorine (Cl) (exclamation mark in a triangle with a crossed-out 'X'), and various cleaning methods. A hand is shown cleaning the panel with a cloth. Cleaning methods are shown with checkmarks (correct) and crosses (incorrect):

- Correct: Using a soft cloth, a sponge, or a brush.
- Incorrect: Using a spray bottle, a bucket, or a scrubber.